



All Electric Ferry

Midshipman 1/C Redmond, Brink, Walsh, Bedoya
Professor Jaye Falls, NAOE Department



Mission

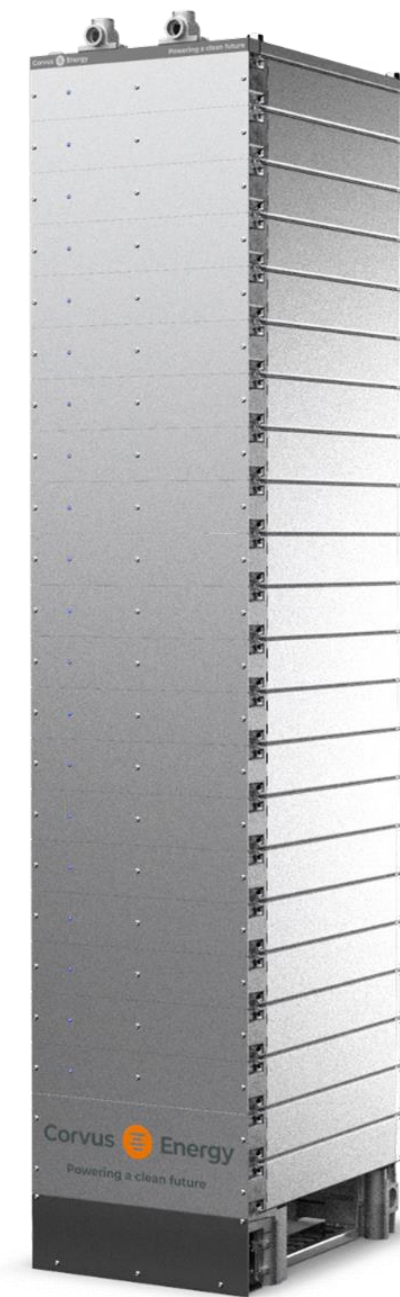
The mission is to provide a scenic, sustainable, high-speed, public ferry service between the popular destinations. The design will be environmentally sustainable, incorporating low-emission propulsion systems that are aligned with the San Juan Islands climate initiatives.

Principal Characteristics

LOA	100.0	ft
Beam	32.7	ft
Depth	10.2	ft
Draft	5.3	ft
Displacement	126.0	LT
Max Speed	20	kts
Passenger Capacity	149	pax

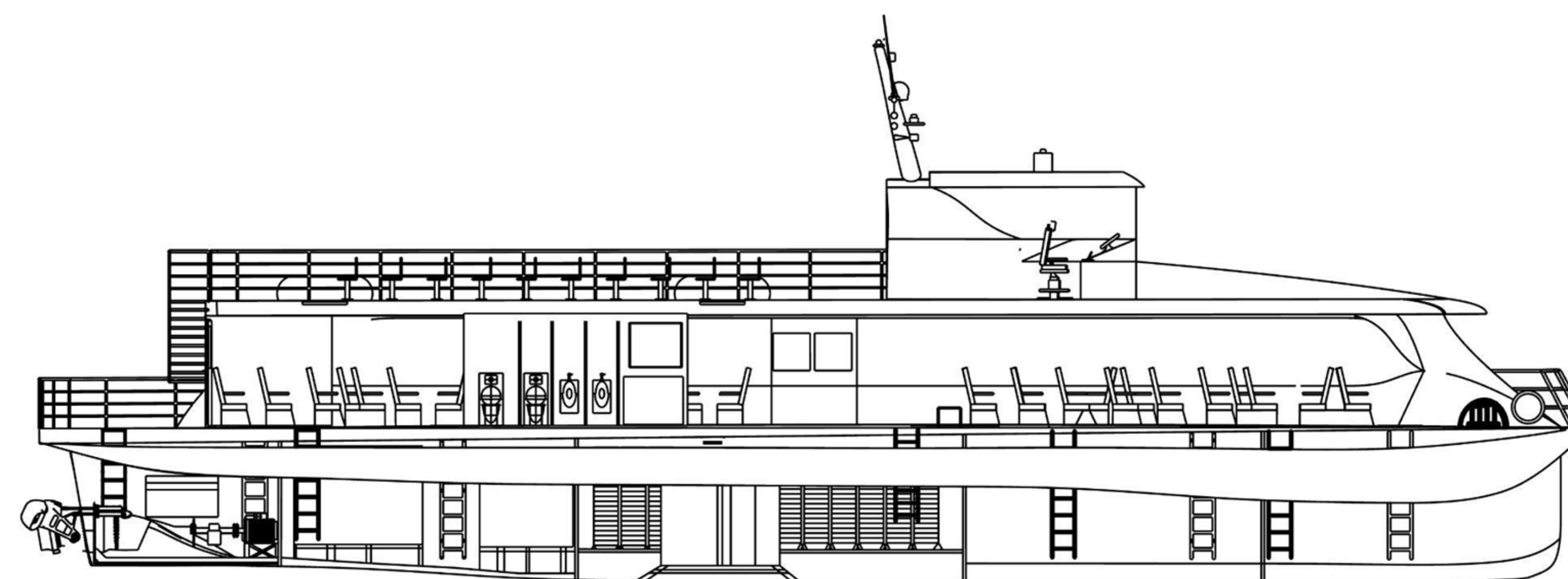
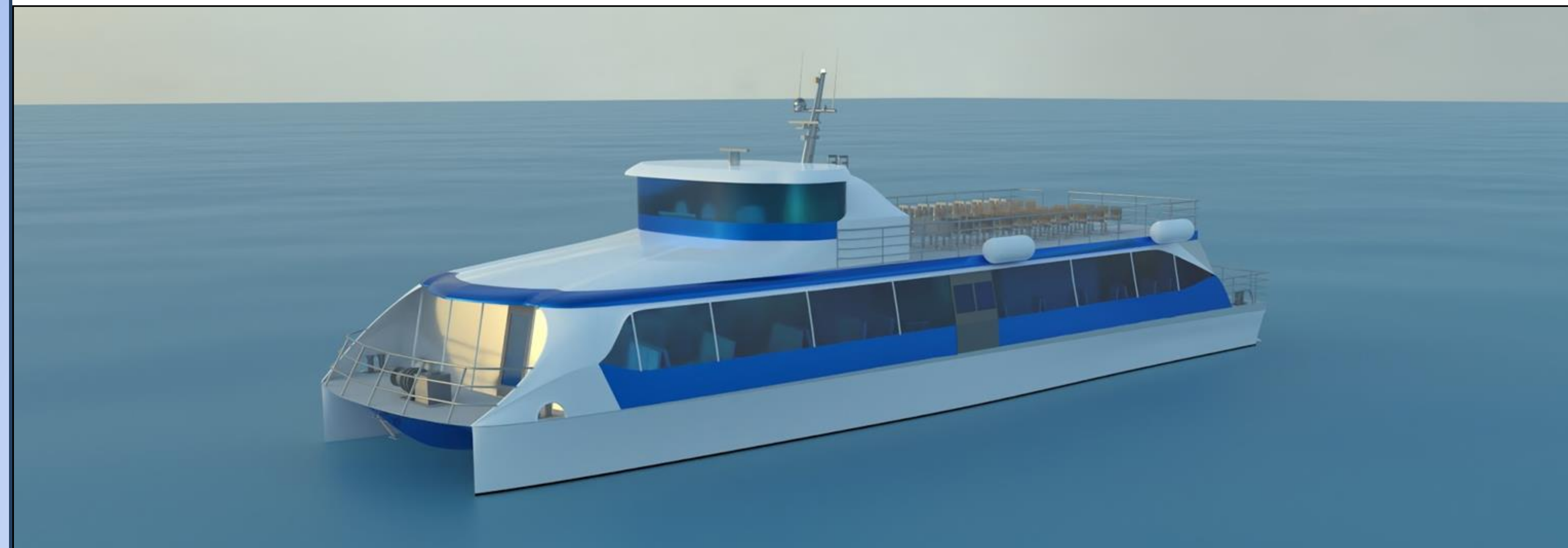
Battery Characteristics

Estimated Battery Capacity	4500	kWhr
Individual Battery Capacity	6.56	kWhr
Number of Batteries Needed	686	
Total Battery Weight	31	LT
C-rate (Continuous)	1.5	CP

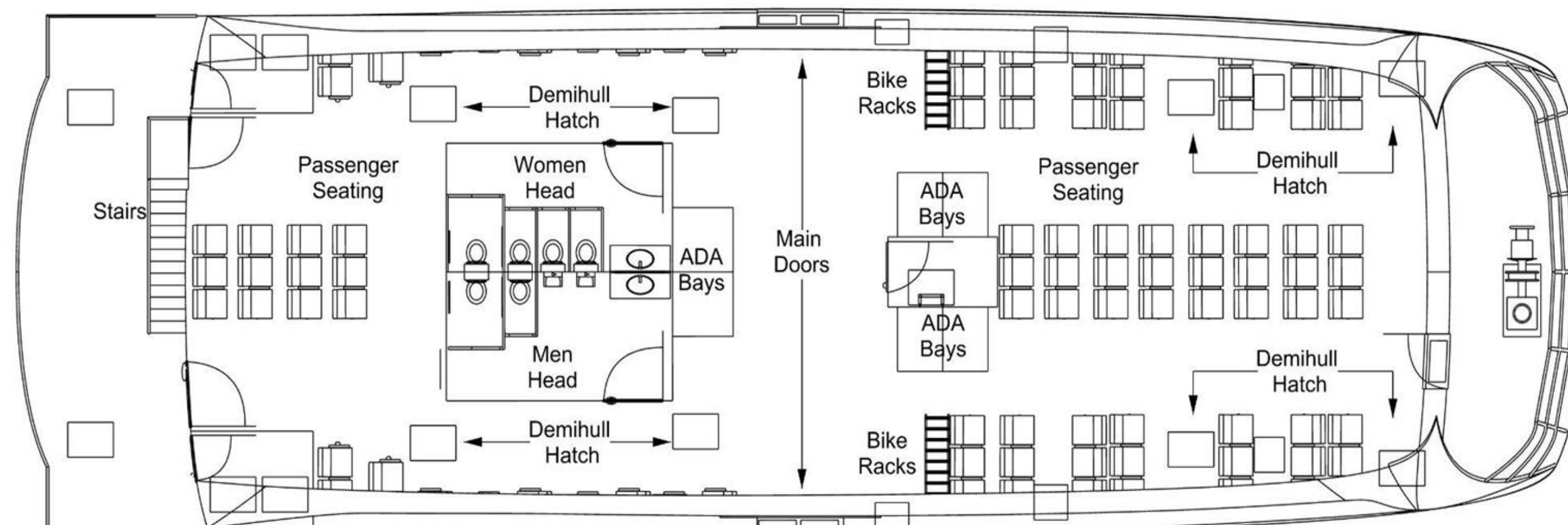


Corvus Dolphin NxtGen Power

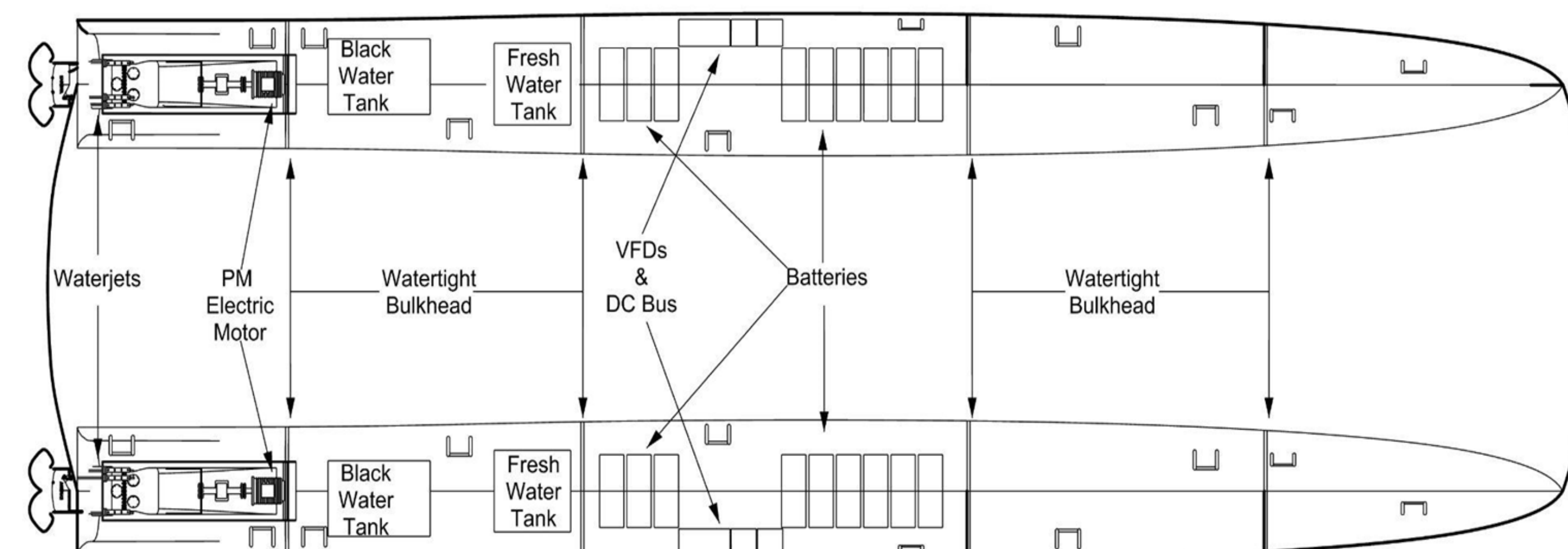
The Chuckanut



Inboard Profile

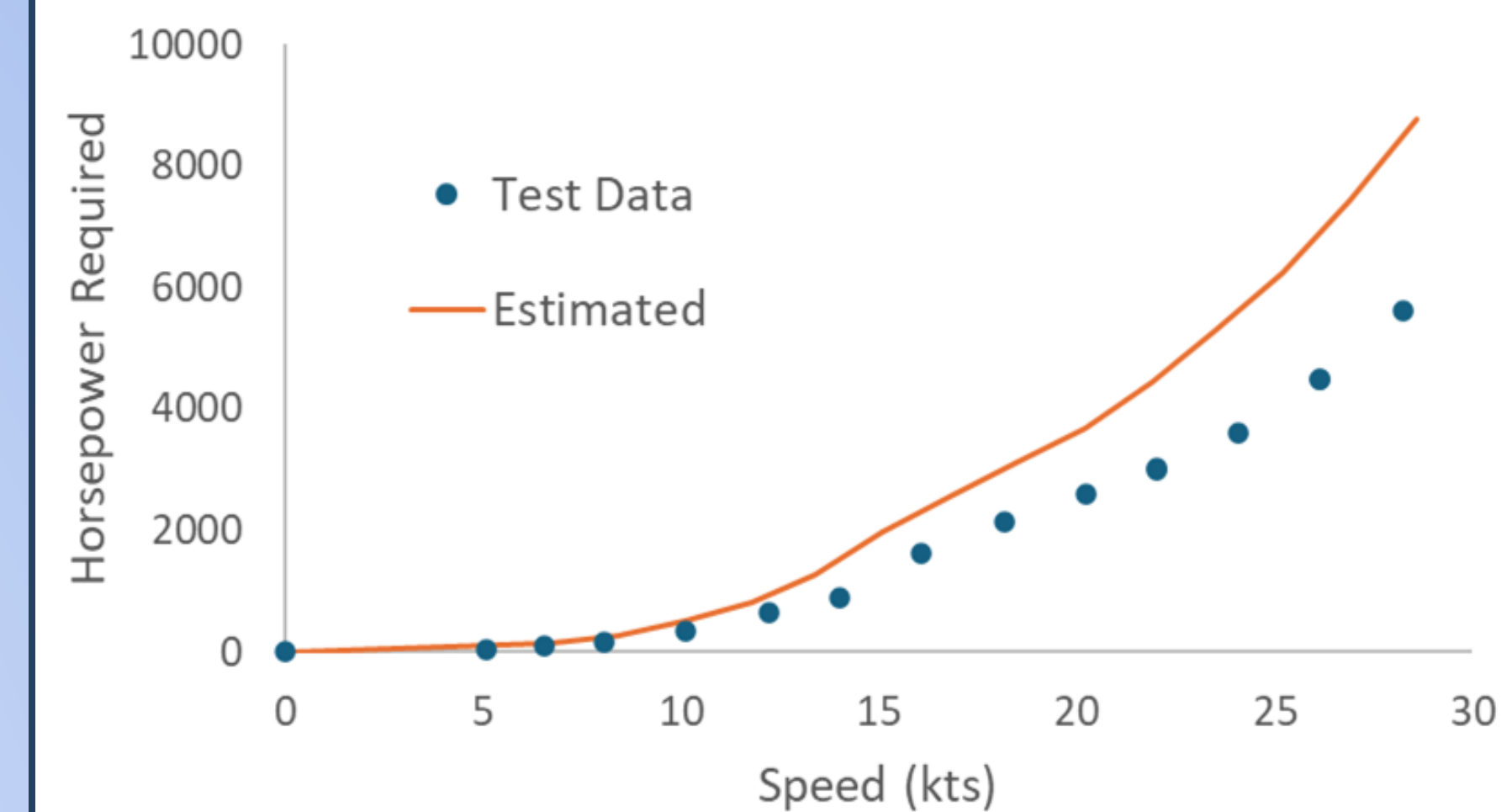


Main Deck



Demi Hulls

Resistance Tests



Route



Route	Distance (nm)	Time (min)
1	10.2	40
2	9.8	38
3	6.7	29

Acknowledgements

- Professor Jaye Falls
- Jan Drumm
- Kitsap Transit Staff
- Glosten
- All American Marine Shipyard
- USNA Tow Tank Staff
- USNA Model Shop Staff