



LOSV Spectre

Midshipman 1/C Johnson-Newman, Mentel, Hall
 Professor Jaye Falls, Naval Architecture & Ocean Engineering



Primary: Mission

- Anti-Surface
- Strike

Secondary:

- Anti-Submarine
- Air Defence
- ISR

Background

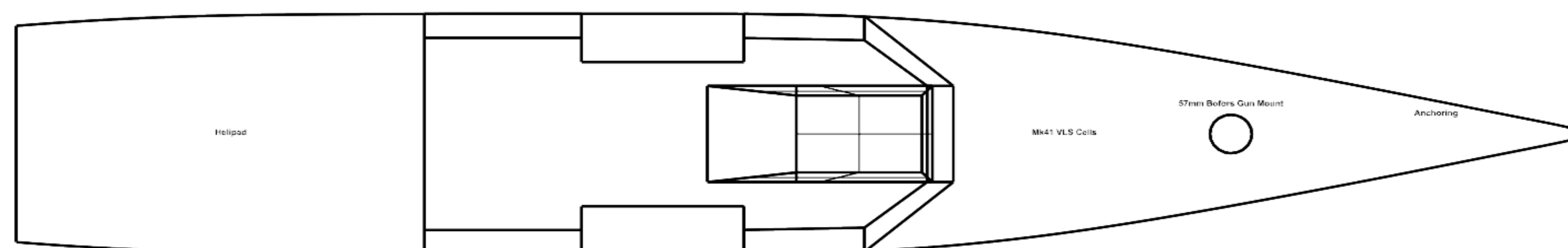
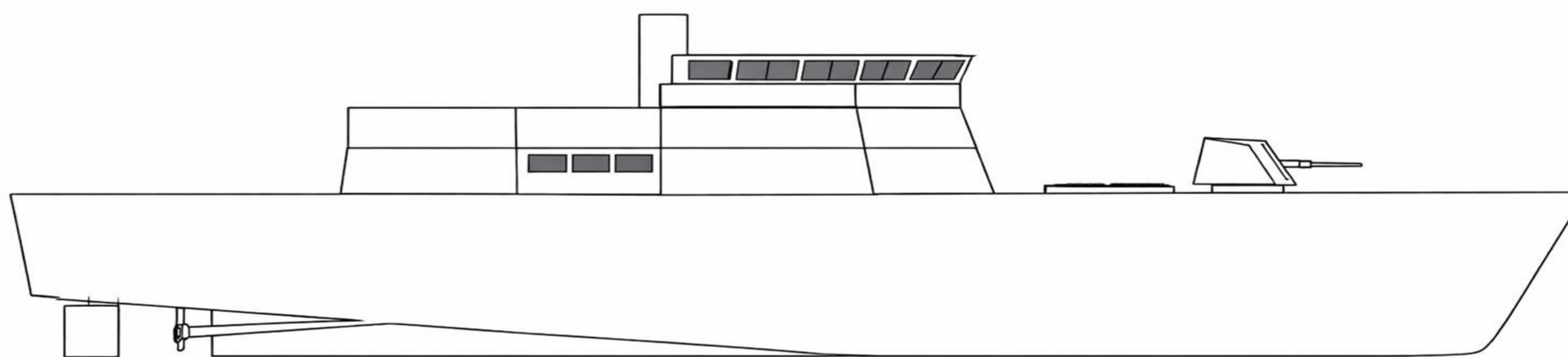
- SECNAV Phelan desired a naval force with more spread-out capabilities
- Navy wants to take advantage of autonomy and decrease costs to build new ships
- Bridge gap of decommissioning of *Ticonderoga* CGs and aging Flight I DDGs

Principal Characteristics

LOA	300 ft
Beam	50 ft
Draft	16 ft
Displacement	2800 LT
Max Speed	24 knts
Max Range	4500 nmi
SHP	26000 HP



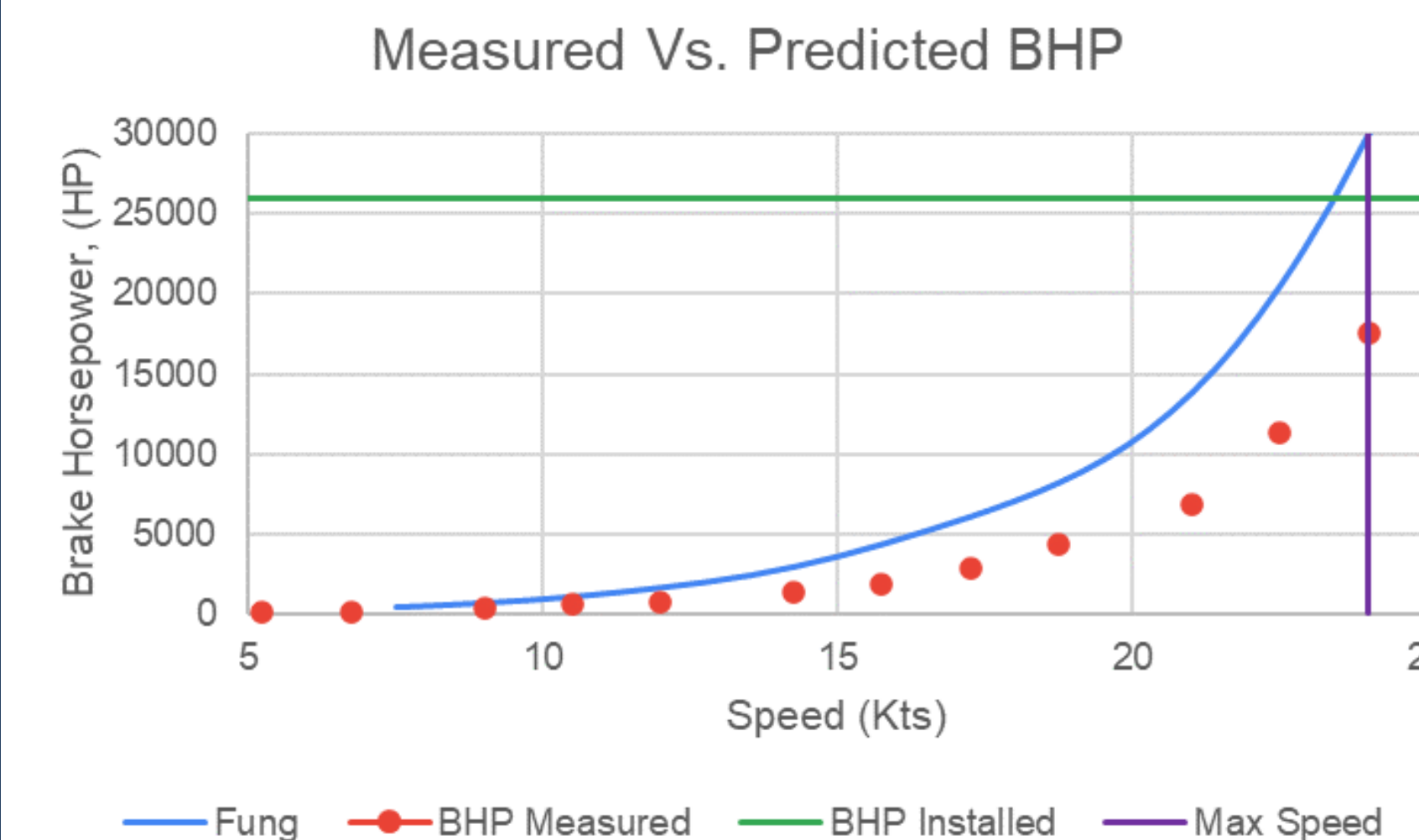
Ship Drawings & Technical Plots



Optionally Manned

- Bridges the Gap between manned and unmanned
- Reliable Systems
- Limited Maintenance
- Deployable in Contested Environments

Technical Plots



Key Features

- Integrated autonomous systems
- Electric transmission
- Margin for powering and speed
- Increased space for sensors
- Increased redundancy
- High stability

Acknowledgements

MSC Graphics
 3-5857,
mscgraphics@usna.edu
 Mon-Thur 0730-2245
 Friday 0730-1700